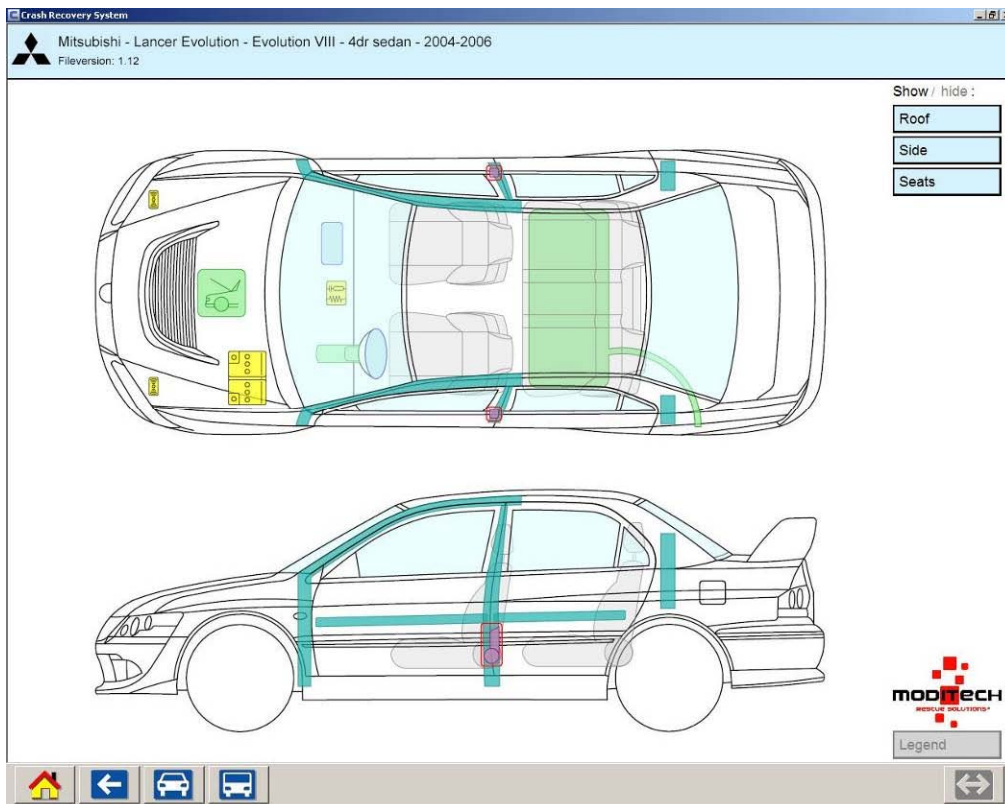


STI B post



Pusher Kill switch symbols



**** Note – Battery locations may or may not same as stock vehicles ****

ES perspective to a rally car

Even though a rally car transits on "normal" roadways and is technically a registered street vehicle it is a highly modified race vehicle with hazards all their own. This sheet is designed as an orientation guide to look for hazards that might be found upon arrival. There will be a variety of classifications of vehicle depending upon 2 or 4 wheel drive, engine displacement, etc. All vehicles will have 2 crew members, a driver and a Co-Driver (navigator) IT is critical to not respond until instructed to do so by net control after they ensure the cars have stopped racing on stage.

First off – Always be situationally aware!

Upon arrival, carefully observe the scene. Is the crew out of the vehicle? Are they displaying a red cross or an OK page from their route book? Remember a crew displaying a red cross means one or both of them are injured. Keep one person as point watching the stage from the direction that the cars are coming from and remember they are spaced approx. 1 minute apart but that spacing can vary.

NEXT – Secure the vehicle !

Think – WEST

- Take down **Window** nets / roll down **Windows**
- Shut down **Electric** system (battery)
- **Secure** vehicle (triangles)
- Turn off **Toggle** switches

Most crews, if uninjured, will have already done these tasks. Just ensure that they have been done

Medical – Assess just like any other patient from a MVC however pay strict attention to damage both in and outside of the vehicle. Look at the seat, the safety cage, are they damaged? Seatbelts, damaged, frayed, stretched? Helmet & HANS device, damaged? What exterior damage is present? What did the vehicle strike?

Firematics – Remember most of these vehicles will be running racing gasoline which will have ethanol in it. However it is possible you will encounter rally cars with other motive power including diesel fuel and hybrid power. Besides fuel, there are other flammable items including vehicle construction materials, engine fluids and even suspension fluids. Be alert for flare ups from dripping fluids onto hot turbos and exhausts.

Rescue Services – Even though these are "stock" bodied vehicles they also have a safety cage, lexan windows and some models have ultra high strength reinforcements in their body structure. Stabilization might be a problem depending on how and where the vehicle ends up. The seats for the crew are structurally strong and extremely form fitting with side wings and bolstering that might need to be removed. Might need to assist crew with self extrication due to entangling cables and lines. Due to these issues power hydraulic cutters and reciprocating saws will have a greater importance than spreading tools. If disentanglement is needed, be aware that these vehicles might be a difficult challenge depending upon the tools at hand.